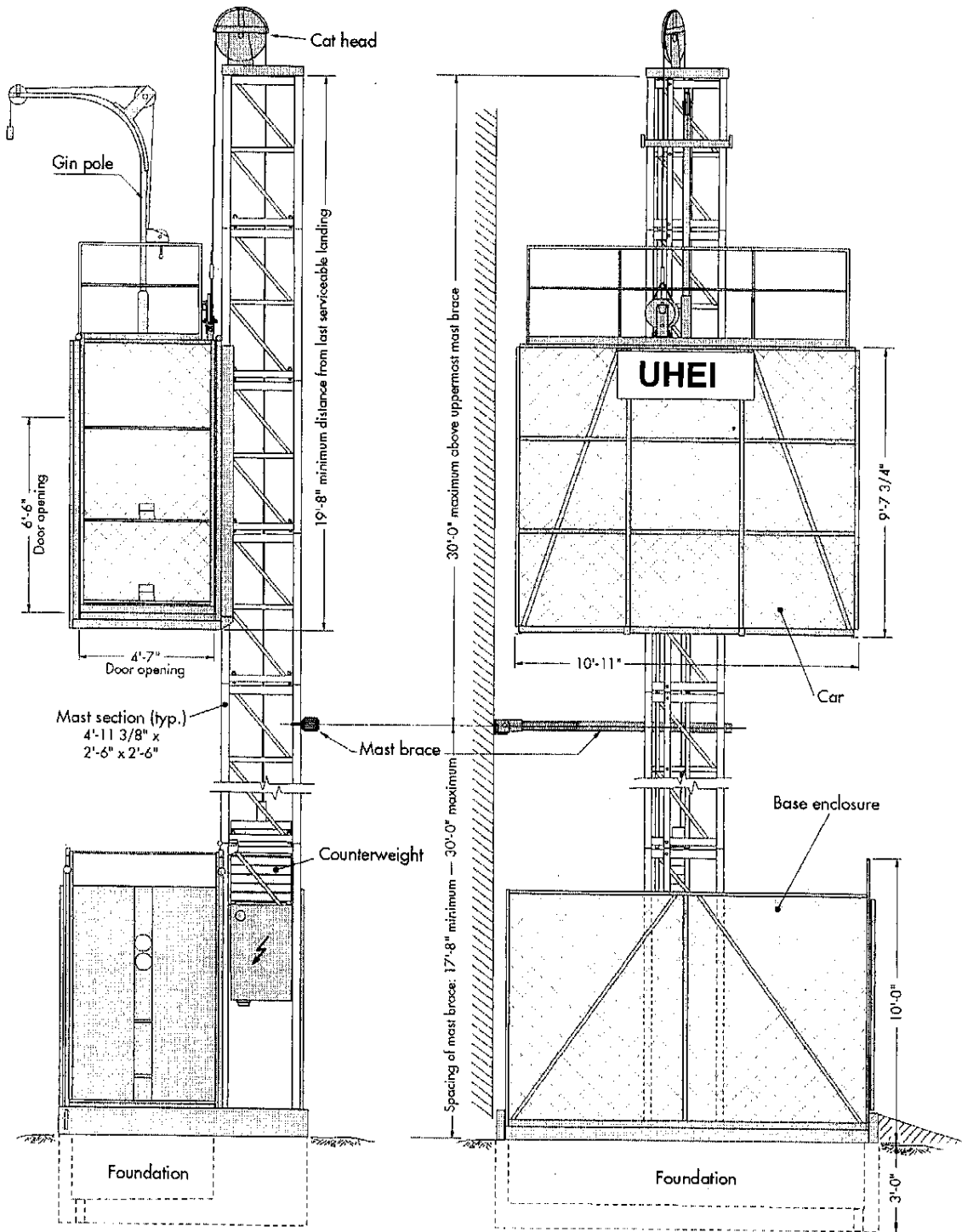


Pecco PH5000-10

Single Car Personnel/Material Hoist



UNITED HOIST EQUIPMENT, INC.

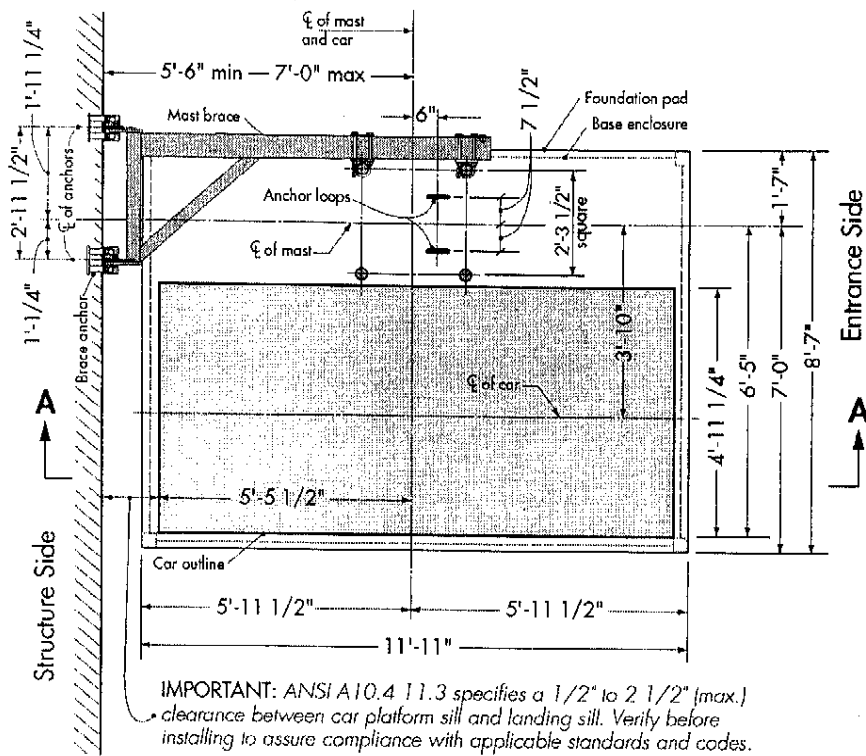
"SERVICING THE INDUSTRY SINCE 1968"

4301 North 40th Street, Tampa, FL 33610 * Telephone: (813) 740-0535 * Fax: (813) 740-1625

Website: www.UnitedHoist.com

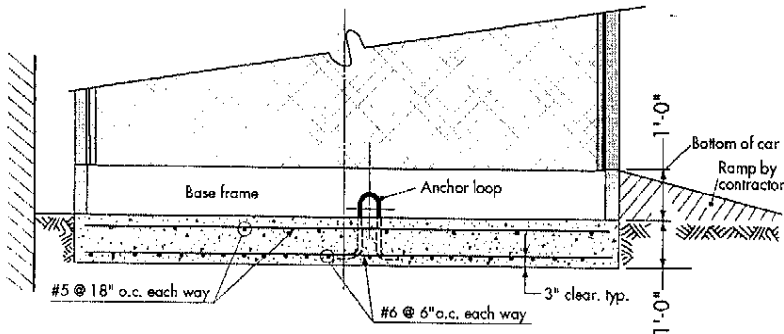
Foundation Details - Slab

PH5000-10



Plan View - Slab

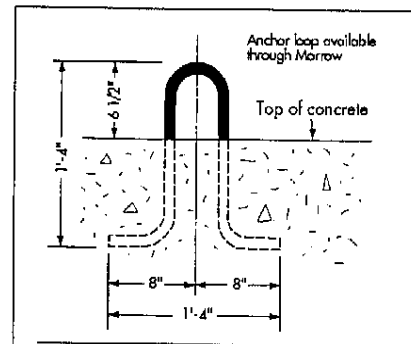
IMPORTANT! Verify that the use of a slab foundation conforms to all applicable federal, state and local standards and codes **PRIOR** to foundation installation.



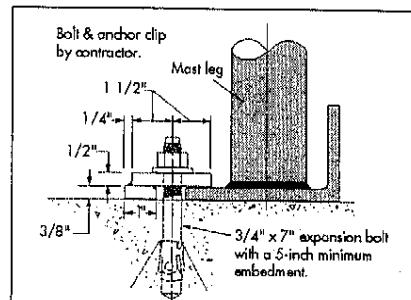
Elevation - Slab
(Section A-A)

NOTES:

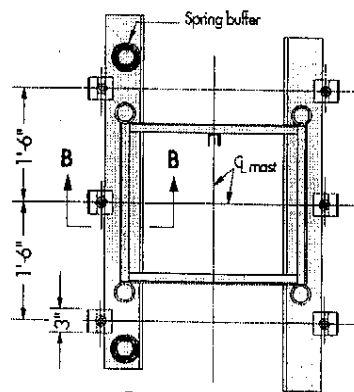
1. Foundation pad: 11'-11" x 8'-7" x 1'-0" with 3,000 psi concrete.
2. Reinforcing bars: ASTM 615-60.
3. Foundation based on 500-foot mast height. For greater heights, consult Morrow engineering.
4. Foundation pad designed for a minimum soil bearing of 1,000 psf.
5. Be sure to check method of mast brace installation. This may determine the location of the foundation pad.



STANDARD ANCHOR LOOP DETAIL (Slab & Pit)



Elevation (Section B-B)

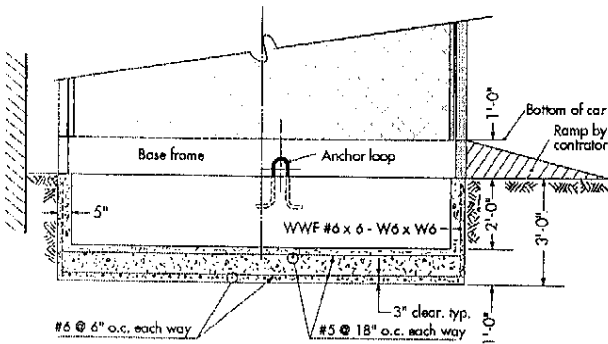


ALTERNATE ANCHOR BOLT DETAIL (Slab Only)

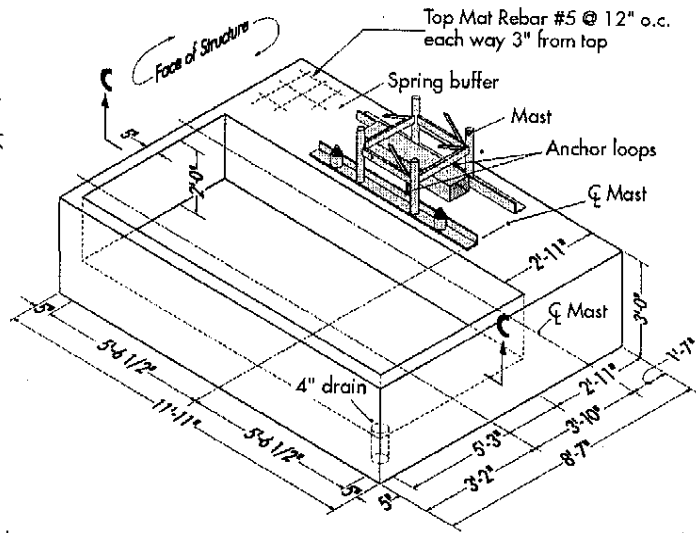
WARNING: When using this anchoring alternative, the car **MUST** remain at ground level until first mast brace is installed. For dismantling, the car **MUST** be at ground level when removing bottom mast brace.

Foundation Details - Pit

PH5000-10



Elevation - Pit
(Section C-C)

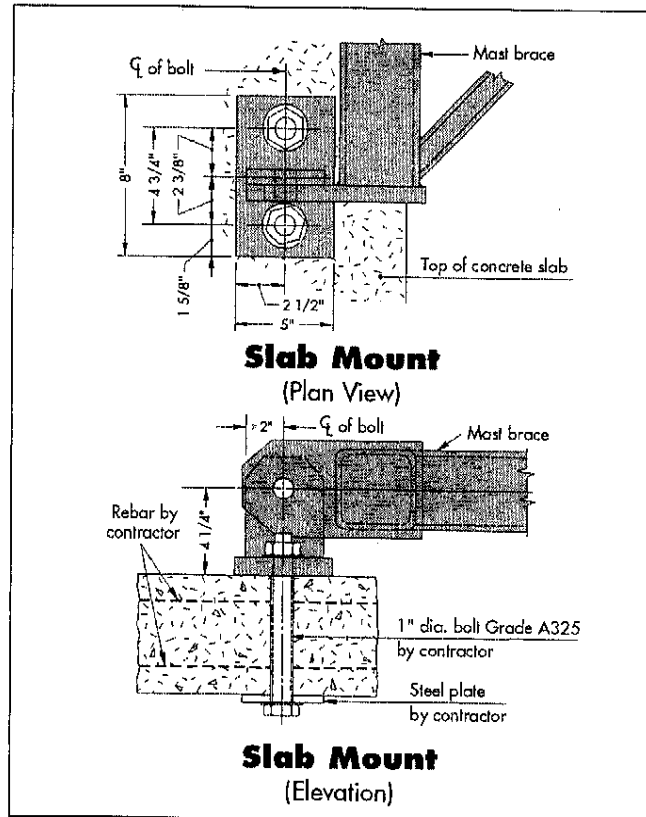
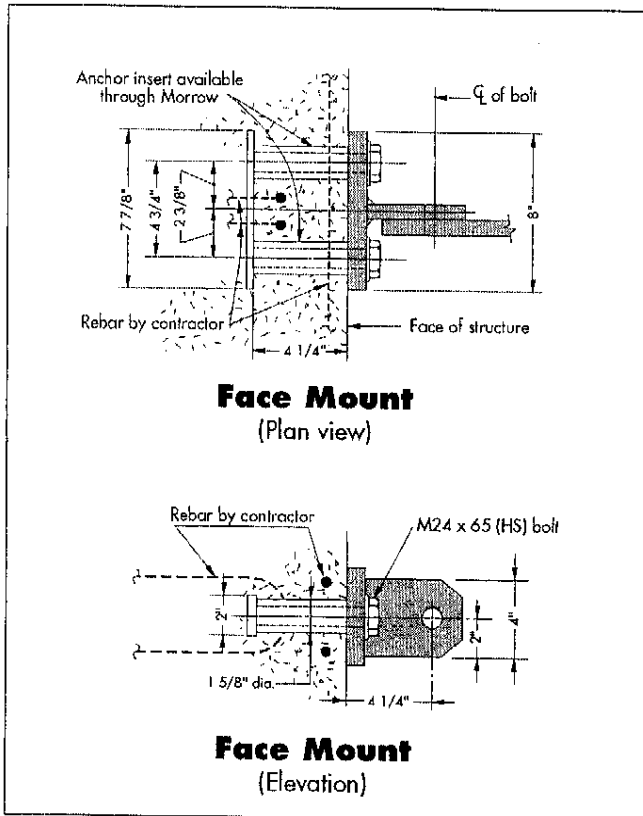


Isometric View - Pit

NOTES:

1. Foundation pad: 11'-11" x 8'-7" x 3'-0" with 3,000 psi concrete.
2. Pit size: 11'-1" x 5'-3" x 2'-0".
3. Reinforcing bars: ASTM 615-60.
4. Wire mesh: ASTM A185
5. Foundation based on 500-foot mast height. For greater heights, consult Morrow engineering.
6. Foundation pad designed for a minimum soil bearing of 1,000 psf.
7. Be sure to check method of mast brace installation. This may determine the location of the foundation pad.

Mast Brace Connections



SPECIFICATIONS

Pecco Personnel and Material Hoist Single Car Model PH5000-10

GENERAL

Load capacity.....	4,800 lbs	Max. height on standard masts	500'
Max. number of passengers	24	Max. height on reinforced masts	1,000'
Car inside dimensions (approx.) ..	4'-10 1/2" x 10'-6" x 8'-8"	Max. freestanding mast height*	40'-0"
Door opening	4'-7" x 6'-6"	* (Applies to standard anchor loop configuration only.)	
Usable floor area	51.2 sq ft	Max. mast above uppermost mast brace	30'-0"
Mast section length	4'-11 3/8"	Maximum mast brace spacing	30'-0"
Speed	150 fpm	Minimum mast brace spacing	17'-8"
Motors	2 x 12 hp	Recommended electrical service	100 Amps
		Power requirement	480 Volt - 3 phase - 60 Hz

WEIGHTS

Base enclosure	3,300 lbs	Hoist car	3,750 lbs
Counterweight	5,300 lbs	Mast section (standard)	275 lbs

SAFETY FEATURES

- Fail-safe brakes on both hoist motors.
- Heavy-duty overspeed governor which activates safeties that clamp directly onto the mast legs.
- Stop and final limit switches that limit hoist car travel when reaching the end positions.
- Door interlock switches which prevent operation of hoist with doors open.
- Spring buffers.
- All steel car.

INSTALLATION

- Adding mast sections does not require additional special equipment.
- For instructions regarding installation and operation of the PH5000-10 single car hoist, refer to the operation manual.
- Specifications are subject to change without prior notification.
- Drawings are for illustrative purposes only. Do not scale.
- This product must be used in a safe manner. Furthermore, the use of this product and its components must be in conformity with manufacturers' specifications and in compliance with all applicable standards, codes, regulations, etc.
- Hoists may have motors and gears mounted inside the car or above the car.

UNITED HOIST EQUIPMENT, INC.

"SERVICING THE INDUSTRY SINCE 1968"

4301 North 40th Street, Tampa, FL 33610 * Telephone: (813) 740-0535 * Fax: (813) 740-1625
Website: www.UnitedHoist.com